



# GECT ARCHIMED

JOINT PROGRAM OF ACTIVITIES 2026-28 / VERSION 1.9 FOR THE TECHNICAL SECRETARIAT



## Archimed



Document Index **INNOVATION, CULTURE, KOINÉ** (version 2026.1.9):

§1. Premises and sources:  
Regulations,  
Convention,  
Statute

§2. Strategic lines:  
Culture, Sports,  
Permanent  
Exhibition-Market

§3. Solutions for the  
operational  
management of  
proposals in the  
culture and tourism  
sector

§4. Management of  
the supply chain and  
transferability of the  
model

§5. Digital twin  
replicability and  
digital platform

§6. Sustainability  
Energy and  
Transport  
policies on  
uncultivated land  
and biological  
diversity

§7. Organizational  
model:  
central board &  
steering committees

§8. Operational  
steps:  
Promoting territorial  
excellence: from the  
website to the  
Macro-Region  
policies



## §1. Premises and sources.

The EGTC (European Grouping of Territorial Cooperation) is the instrument created by the EU to promote cross-border cooperation, endowed with legal personality to operate within the framework of economic and social cohesion policy.

The Community legislative source, identified in Regulation (EC) No. 1082/2006 of the European Parliament and of the Council of 5 July 2006 on a European grouping of territorial cooperation (EGTC), subsequently amended by Regulation (EU) No. 1302/2013 of the European Parliament and of the Council of 17 December 2013 as regards the clarification, simplification and improvement of the rules on the establishment and functioning of such groups, as well as Article 174 of the Consolidated Treaties, which pays particular attention to the "*regions that present serious and permanent natural handicaps*", including island regions.

The Sicily Region, together with the Government of the Balearic Islands and the Larnaca District Development Agency (Cyprus), has established the EGTC "ARCHIMED" (Archipelago of Mediterranean Islands) to bring together all the large island regions south of the EU, stretching towards the southern border.

**Based on the decisions of the General Assembly held on October 30, 2025 in Palermo, the current composition of the corporate bodies is as follows:**

*President- Attorney Francesco Attaguile;*

*Director- Dr. Davide Crimi;*

*Technical Secretariat- Dr. Gian Andrea Garancini, (coordination of partners for projects involving private funding from EU sources - Interreg, Eni-Med, etc.)*

### **Shareholders' Meeting:**

1. *Region of Crete*
2. *ANCIM (National Association of Municipalities of Smaller Islands)*
3. *G.A.L. Tyrrhenian-Aeolian*
4. *Upper Tyrrhenian Port Authority - Livorno*
5. *Larnaca District Development Agency - Cipro*
6. *Municipality of Taormina*
7. *Costa MED E.E.I.E. - Malta*
8. *Municipality of Catania*
9. *Municipality of Palermo*
10. *Heraklion Development Agency*
11. *CASTLE*
12. *Municipality of Orroli*

*The Sicilian Region, promoter and founder of the ArchiMed EGTC and host Region by virtue of the Convention and art. 4 of the Statute, confirmed its membership with Resolution no. 154 of 27/03/2022 of the Government Council.*



**Critical observations based on DAR note 22483 of 24/12/2025** regarding the accession of new members as the subject of unanimous vote of the Assembly.

It is worth recalling that:

Article 1, paragraph 2 of the Convention defines that: *“The members are subjects of island regions or the island regions themselves of the Mediterranean basin belonging to the territory of Italy, Spain and Cyprus and are respectively, the Sicilian Region, the Government of the Balearic Islands and the Larnaca Development Agency of Cyprus (Larnaca District Development Agency – Cyprus).”*

Article 2 of the Statute states: *“The members of the ARCHIMED GECT are: - the Sicilian Region; - the Government of the Balearic Islands; - the Larnaca District Development Agency of Cyprus”*.

Mediterranean island regions and other entities envisaged pursuant to REGULATION (EC) No. 1082/2006, which are located in the Mediterranean and request membership pursuant to the following art. 3 and whose membership is approved by the ARCHIMED Assembly pursuant to art. 9, letter b), may be part of the ARCHIMED GECT.

It appears necessary to reorganize responsibilities, requiring a new resolution to affirm the intention to continue activities and, where necessary, delegate operational functions.

**This condition appears to be conducive to the functioning of the GECT**, therefore it will have to constitute the first operational objective, which could be called "New institutional configuration of the Institution". In the meantime, **the present organization of the Board of Directors** as defined in the most recent minutes of the Assembly, it must be considered an operational tool in charge for the maintenance of ordinary administration.

From the [\*\*CONVENTION OF THE EUROPEAN GROUP OF TERRITORIAL COOPERATION IN THE MEDITERRANEAN ARCHIPELAGO\*\*](#) the following articles relating to purposes and aims are transcribed:

#### **Article 5 – General and specific objectives.**

ARCHIMED pursues the following general objectives, in order to strengthen economic and social cohesion among the territories of the signatory bodies, especially with reference to the programming of the Structural Funds, starting from the 2007-2013 programming cycle:

- the creation of a stable space for cooperation between the Mediterranean islands belonging to the territory of Italy, Spain and Cyprus;
- the promotion of the common interests of its members within the European Union;
- the development of exchanges between the respective communities in the cooperation areas referred to in Article 6 below. In particular, ARCHIMED pursues the specific objective of implementing territorial cooperation programs, projects, and actions in the territories indicated above, pursuant to Articles 7, paragraph 2 and 3, paragraph 1 and paragraph 2, of Regulation (EC) No. 1082/2006 of the European Parliament and of the Council of 5 July 2006 and paragraph 6 of Regulation (EC) No. 1080/2006 of the European Parliament and of the Council of 5 July 2006;



## Article 6 – Areas of cooperation.

Within the objectives set out in Article 5, ARCHIMED members undertake to establish forms of social, cultural, commercial, and scientific collaboration in fields of their respective expertise and mutual interest. This collaboration will be developed on a basis of equality and mutual benefit. Cooperation will be primarily focused on the following areas: • Sustainable management of natural resources • Rural development • Fisheries • Transport and communications • Culture • Tourism • Research and innovation • Euro-Mediterranean territorial cooperation • Energy • Initiatives for the social integration of migrants and the enhancement of intercultural relations • Other areas within the Partners' expertise, prioritizing those requiring specific public investments, including those included in the European Structural Funds programming cycle.

## Article 7 – Activities.

To achieve the general objective established by this Convention, ARCHIMED:

- organizes the preliminary work, drafting, presentation and implementation of community and non-community programmes, projects and other initiatives aimed at the sustainable development of its members;
- organizes study meetings, seminars, and training courses on topics of common interest;
- promotes the exchange of information, methodologies, documentation and publications.

## *Further essential references to the Regulation, Convention and Statute*

Pursuant to Article 10 of the **Regulation 1082/2006** The GECT must have at least the following bodies:

- a) an assembly consisting of representatives of its members;
- b) a director, who represents the EGTC and acts on its behalf.

The statutes may provide for other bodies, with clearly defined powers.

A EGTC is responsible to third parties for the actions of its bodies, even when such actions do not fall within the EGTC's tasks.

The **Regulation 1302/2013**, of amendment of R. 1082/2006, highlighted:

- EGTCs operate in more than one Member State. Therefore, the presence of at least two entities from two different Member States is essential (6) *considering*;
- "public enterprises" should also be included among the possible partners of the GECT (8) *considering*;
- simplification of procedures by distinguishing between the Convention and the Statutes (12);
- possibility of transformation into limited liability and/or opportunity to take out insurance (31);



The article 3 of the **Convention** states that the GECT ARCHIMED, under Italian law, has legal personality under public law.

**Statute**, Article 5 affirms that in addition to the language of the member where the registered office is located, i.e. Italian, the working languages are Spanish, English and French.

### ***Tasks of the Director; in particular: Joint Programme of Activities***

Article 11 of the Statute provides for a Director appointed by the Assembly, with costs borne by the associate member to whom the appointed director belongs.

The Director is responsible for drawing up a joint program of activities, to be submitted to the President in coordination with the Technical Secretariat.

This document is therefore to be understood as fulfilling the function referred to in Article 11 of the Statute.

## **§2. Strategic lines: circuits between the MEDITERRANEAN ISLANDS**

Pending a broader sharing and consequent distribution of the thematic areas, at the current stage of the development of the strategic guidelines for 2024, a programming line emerges with feasibility projects at a reasonable level of definition which allows us to frame the thematic scope of cooperation in the sectors **tourism, culture and sport**, in implementation of Articles 5, 6 and 7 above in the manner defined below.

Specifically, it involves using the dual lever of culture and sport to fuel mobility flows that create integrated relational tourism circuits between the Mediterranean islands.

The points of greatest maturity for setting up these lines of communication essentially consist of a project already active for private dynamics which, by leveraging the **ANCIENT THEATRE**, a peculiar factor of Mediterranean culture, a perfect catalyst for the additional activities of the most important education and training institutions -**Schools and Universities**- generates an economic benefit that emerges from the concentration on organizational objectives around the educational trips that schools usually organize, as an integral element of their educational and instructional programs, for fourth- and fifth-year classes.

The Ancient Theatre must therefore be conceived as a visit to the archaeological sites that have a direct relation with this **MONUMENTAL DIMENSION**, also containing evidence of Mediterranean antiquity such as temples or finds to visit and learn about through museums, and also as **intangible culture**, consisting of the repertoire of dramas from the classical tradition.

This activity already has a consolidated presence, having been implemented since 2019 and today, after the successive editions, it is able to express a consolidated network of representative schools of the **entire national territory** and about to start **anew phase of internationalization**, involving schools and universities in the territorial area of competence of the GECT, orienting the **replicability/transferability of the initiatives throughout the entire circuit of the Islands.**



For a look at the national and international dimension (in partnership with Greece, Bulgaria and Spain) already achieved and consolidated, please refer to the page [THEATRE FOR SCHOOLS](#) where you can find a rich photographic repertoire of the initiatives already carried out, with reference to the schools of the national territory that have given rise, in the chosen setting of the Ancient Theatre of Catania, to classical performances.

This model can be easily reproduced on the size of the **SPORT**. The essential key is to obtain a stable picture of the **TRANSPORT** system, both in terms of air and sea transport (cross-border) and local transport (interregional and urban).

The **award "AL IDRISI"** (already consolidated in the experience of promoting cross-border Mediterranean culture by the City of Palermo, it can easily be thought of as a further and invigorating driving force for this circuit.

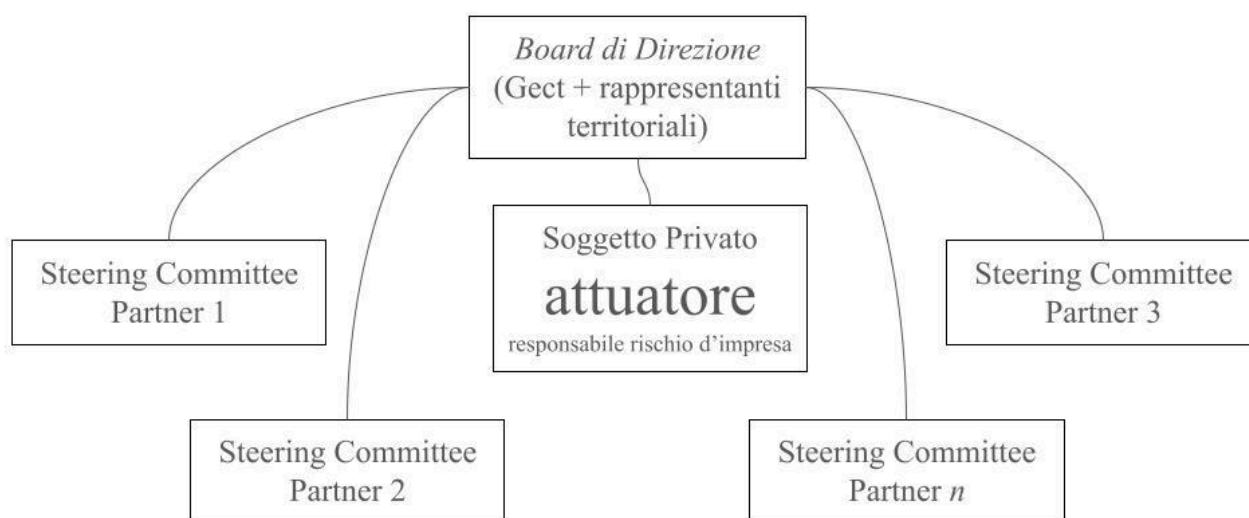
The construction of the model is completed with the possibility, once the model of the board of directors and the territorial steering committees has been consolidated, to operate within the framework of excellent food and wine production (OIL, WINE, ANCIENT GRAINS, LUTHERIA, TEXTILES) and to evaluate the possibility of creating permanent partnerships in the field of **SUSTAINABLE ENERGY**, directing actions in terms of strategy **MACRO-REGION**.

*The logical architecture of the ancient theatre project as an integrated relational tool (transferable to sports, permanent exhibition-market, sustainable energy, etc.) can be summarised in the sequence:*

Schools	University and cultural institutions	Private individuals	Local and Territorial Authorities
Travel arrangements and student participation, coordination of the staging by teachers, possible access to PON funds or other measures to support the initiative for the purposes of inclusiveness.	activity evaluation methodology, epistemological framework of direct and indirect teaching activities, coordination of steering committees at the local level, technical-scientific consultancy; artistic and musical skills.	Promoters of entrepreneurial activities in event organization and management, assumption of business risk, coordination of private resources involved in related activities (travel agencies, restaurateurs, hoteliers, etc.)	political direction for implementation, coordination of authorizations including in service conferences, simplification of procedures, implementation of procedures and related responsibilities.

### §3. Solutions for operational management of the proposals.

The four types of subjects can be coordinated according to the model used in the Community instruments of *steering committees* at a territorial level and from *aboard* central level management.



The private entity will be chosen on the basis of the procedures of the current Contract Code, with particular reference to the contractual threshold being evaluated and the inadmissibility of fragmentation of a single contract being remembered, or through forms of **public-private partnership**. This includes a proposal from economic operators for a feasibility study and a draft agreement, accompanied by a certified economic-financial plan detailing the costs incurred in preparing the proposal, including intellectual property rights.

The agreement transfers the business risk to the private implementing entity, while maintaining the public entities' share of commitments and the related simplification procedures, including the service conference where appropriate, under the responsibility of the EGTC and the specifically designated management board.



#### §4. Management of the supply chain: the case in progress - Ancient Theatre Week

The Greek concept of *wisdom* It is at the basis of the noblest tradition of Mediterranean thought, through theatrical representation it is expressed as knowledge of myths and legends handed down, but also of archaeological sites, urban places and, through the updating of these myths and legends, concrete action is taken on the promotion of the basic elements, which will be associated with a permanent exhibition -**MARKET EXHIBITION “Minerva, Dionysus and Demeter”** -which will accompany the **ANCIENT THEATRE WEEK**: The *wine* (Dionysus), the *grain* (and especially the ancient and quality grains / Demeter), the *oil* (Minerva). The costumes and sets call for excellent textiles and craftsmanship.

The educational and cultural objective of the project is to stimulate the desire to know in young people starting from *knowing how to read the city* through its streets, its monuments, its hidden treasures. Applied to sustainability. This means laying the social and cultural foundations for closing the urban area surrounding Catania's ancient theatre (Via Vittorio Emanuele) to traffic, to be extended in the future to the parallel Via Garibaldi, by starting a partnership with the Municipality for the construction of parking lots on the western edge of the two streets, interconnected by electric buses and supported by policies connecting the metro and the airport.

During **THE WEEK OF ANCIENT THEATRE** An experiment will be launched with the aim of making the new functionality stable. Through this process, it will be possible to obtain a *scalability* of the results (on the one hand, from the point of view of the event itself, the growth in significance of the initiative *from local festival to international event*; on the other hand, in terms of eco-sustainability results, the growth in significance of closing archaeologically relevant areas to car traffic and the extension of these policies from temporary to permanent, as well as the *replicability* of the model – in both spheres of meaning – in the partner cities, to characterize itself as *best practice* recognized.

##### *Inductor sequence*

Agricultural products	<i>wine, oil, grains, fruit</i>	Digital twin
Artisanal products	<i>silk, perfumes, textiles, jewelry, sweets</i>	Website for online purchase of packages, as well as for e-commerce of partner companies' products, editorial content (short movies, edition archives, magazines, etc.)
Tourist services	<i>transport, restaurateurs, hoteliers</i>	



## §5. Transferable twins and digital twin (specifications)

**THE WEEK OF ANCIENT THEATRE** - existing project that has proven to work -has already laid the foundations for the "transferable twins": the PERMANENT EXHIBITION-MARKET is a first direct extension, the complete transfer of the cultural tourism model inspired by the Ancient Theatre can retain the structural framework (agreement with the Schools, student mobility, organizational involvement of teachers, governance of mayors, chambers of commerce and tourism organizations, long and medium-distance transport network, urban networks, authorities responsible for authorizations) of the territorial steering committees) to be replicated entirely on the theme of SPORT and, in a more advanced phase, SUSTAINABLE ENERGY.

The "digital twin" is the transposition of the model applied to the various application sectors (INTEGRATED RELATIONAL TOURISM through THEATRE, EDUCATIONAL THEATRE, SPORT, PERMANENT EXHIBITION MARKET, SUSTAINABLE ENERGY, SUSTAINABLE TRANSPORT) creating a virtual window into this process and the related products and services. The memory archive, which contains the *annals* The event serves as a bridge between the physical and digital worlds, providing a continually updated story to tell, both for those approaching the Festival experience for the first time and for those who have been part of it and want to remember, document, and share it. Furthermore, with statistical analysis, the site allows for detailed data monitoring and systems visualization to solve problems, develop new opportunities, and simulate the future.

<b>TOURISM INTEGRATED RELATIONAL</b>	PROFESSIONAL THEATRE	<b>E-BUSINESS WEBSITE</b> <i>I BOOK, BOUGHT, FOR SALE</i>
	EDUCATIONAL THEATRE FOR SCHOOLS	
	SPORT - SCIENCE	
	PERMANENT MARKET EXHIBITION	
	SUSTAINABLE ENERGY	
	SUSTAINABLE MOBILITY	

The replicability/transferability of this organizational model is easy to imagine on the **SPORT**, and it is equally simple to position it on the size of the **MARKET EXHIBITION** *oil, wine, ancient grains, honey, excellent products of the Mediterranean diet, violin making and textiles* (which will be able to position themselves permanently on the digital twin, the e-business system which will act as a permanent showcase on the web, the driving force behind the knowledge of the **MEDITERRANEAN ISLANDS CIRCUIT**).



The model *Internet of Things* The platform, which inspired the operation, allows for microtransactions between different devices to exchange services, resources, and data. The purchase of integrated accommodation packages, tickets for shows, and scheduled transportation systems, as well as the on-demand marketing of premium products (olive oil, wine, ancient grains, textiles, and fine crafts), are part of the smart and sustainable marketing project linked to the permanent exhibition of the Ancient Theater Week, through the creation of an integrated e-commerce platform.

## §6. Sustainability and Circular Operating Models

On the topic of **sustainability**, *Ancient Theatre Week* lends itself to experimental transport solutions - port and airport systems for cross-border transport; electrical systems for regional and urban transport: for the latter, it is desirable to expand the number of experimental closures to traffic during events.

On the subject of **circular economy**, the reference model is given by *GEX – Green Europe Experience*, A circular economy festival, which demonstrated the possibility of fundamentally changing the traditional management logic of energy sources and consumption, by creating, testing, and evaluating a model of sustainable and replicable production and monitoring practices.

The PERMANENT EXHIBITION-MARKET is perfectly suited to testing new models in harmony with the generation of SUSTAINABLE ENERGY, which can be built on a project scale by consolidating the partnership circuit through the organisational model of the **GECT ARCHIMED as the entity that carries out central institutional coordination and works territorially with the steering committees.**

The Ancient Theatre Week is configured as a real laboratory of practical experimentation for the integration of policies *green* in the sector of cultural events and cross-border tourism.

### Sustainable Logistics and Mobility

Regarding transportation, the initiative lends itself to innovative experimental solutions. From a cross-border perspective, integrating and optimizing the port and airport system with low-impact modes of transport is essential. At the regional and urban levels, the aim is to incentivize and implement the use of electric and hydrogen systems for public transportation and shuttle services.

For urban transport, it is desirable to extend the experiments of total closure to private vehicular traffic in the areas adjacent to events during the course of the demonstrations, encouraging the exclusive use of shuttles *shuttle* electric and micromobility (bicycles, *scooter* electric). The aim is to minimize the carbon footprint of the entire visitor logistics and *staff*.



## Circular Economy and Energy Management

In terms of the circular economy, the reference model is GEX – Green Europe Experience, a festival that has already demonstrated the possibility of fundamentally changing the traditionally understood logic of managing energy sources and consumption. GEX is not just an example, but a replicable methodology that has allowed us to test and evaluate a model of production and waste management practices (*zero waste*) and sustainable monitoring. The adoption of this model implies:

- **Self-production of energy:** Temporary or permanent installation of photovoltaic systems and lightweight wind turbines to power event facilities.
- **Water Management and Prevention of Hydrogeological Instability:** Rainwater harvesting and reuse, minimizing water waste; analysis of land exposed to potential hydrogeological instability; planting of spontaneous crops to restore degraded uncultivated land; and use of plant residues for biomass energy plants.
- **Materials:** Exclusive use of recycled, recyclable or compostable construction materials and *upcycling* for the creation of the scenography.

## Prototyping and Governance

The PERMANENT EXHIBITION-MARKET annexed to the project is perfectly suited to become a test-bed for new models in harmony with the generation of SUSTAINABLE ENERGY. This exhibition space can host, for example, demonstration installations of *smart grid* and *micro-grid* powered by local renewable sources.

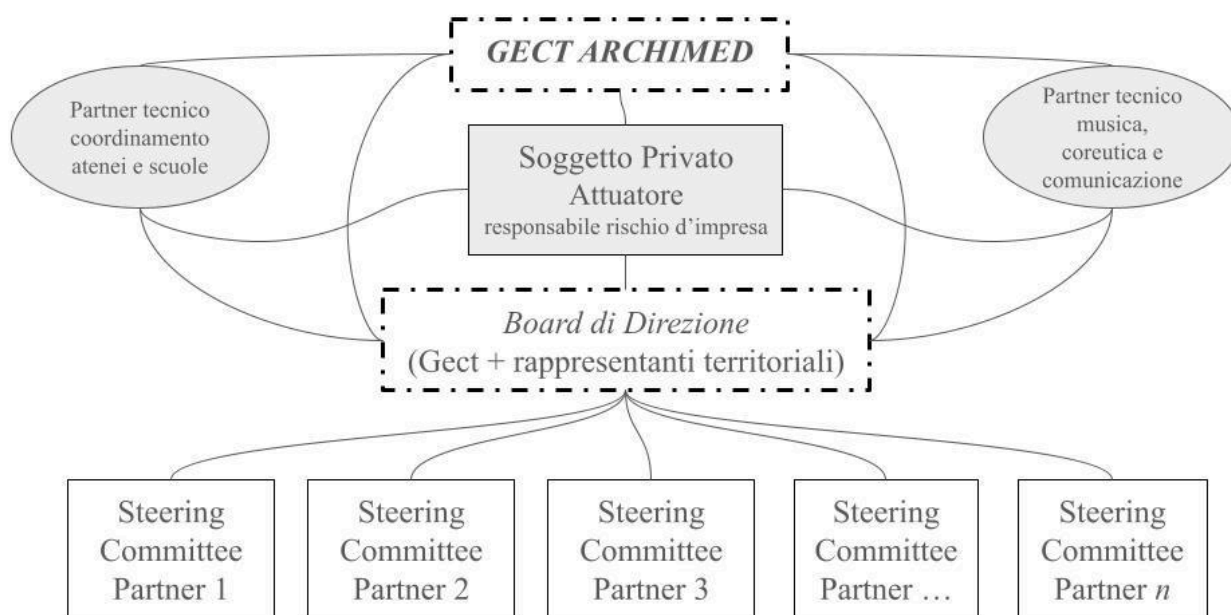
A particularly important area, where it will be important to strengthen the strategy within a year, is the management of UNCULTIVATED LAND: we know that the CAP (Common Agricultural Policy) has so far provided financial support to agricultural producers not based on the yield but on the size of their land, giving rise to behaviors that have encouraged non-production, partly due to the unsustainable competition from large-scale retail outlets from third countries. For this reason, it is important to adopt strategies for the PREVENTION OF HYDROGEOLOGICAL INSTABILITY, for which biomass energy production represents an important and economically sustainable alternative. These considerations also apply to developing policies aimed at revitalizing abandoned villages and implementing the "sprawl city" system.

These objectives can be built on a project-based scale by consolidating the partnership network through the organizational model of the ARCHIMED GECT (European Grouping for Territorial Cooperation).

**GECT ARCHIMED** It assumes the role of central institutional coordinator, ensuring strategic coherence and harmonization of cross-border regulations. The EGTC will work territorially with the *steering committees* local, ensuring that sustainable practices are not only theorized, but actually implemented, monitored and evaluated, transforming the Ancient Theatre Week into *abenchmark* European for the sustainability of cultural events.

## §7. Organizational model.

By identifying these essential partnership stakeholders, the organizational model is better specified as per the functional chart:



At the level of the territorial Steering Committees, the following model example can be made, considering the need to adapt the basic model according to local peculiarities:

<b>Steering Committee</b> <i>partner territorial</i>	Municipality, Local Authority
	Body responsible for archaeological or sports sites
	University
	Schools
	Private partners



**Catania, Italy (Sicily)**



**Larissa, Thessaly (Greece)**



**Plovdiv, Thracian (Bulgaria)**



## §8. Operational steps

The consolidation of the Central Management Board model (the EGTC in its institutional role as coordinator of the cross-border partnership) and the territorial steering committees (as local branches by area and specific objective) could give rise to effective MACROREGION policies, of which the EGTC is the immediate expression, deriving from the programming context that defined them in Community law.

The **Macro-regional Strategies (SMR)** are **political paintings** which the EU has developed **asterritorial cooperation instrument**to address common challenges and exploit the potential of contiguous geographical areas involving Member States and non-EU countries.

Their role is to **improve coordination** in order to achieve the objectives of **economic, social and territorial cohesion** of the Union. The **territorial cohesion**, It is an explicit Community objective established by the Treaty of Lisbon (2007) and is part of the Acquis.

Currently, the EU has adopted **four** Macro-regional Strategies:

1. **EU Strategy for the Baltic Sea Region**(EUSBSR, 2009)
2. **EU Strategy for the Danube Region**(EUSDR, 2010)
3. **EU Strategy for the Adriatic-Ionian Region\*** (EUSAIR, 2014)
4. **EU Strategy for the Alpine Region\*** (EUSALP, 2015)

*\*Italy is involved in strategies 3 and 4*

Through these policies, The**GECT ARCHIMED**could be configured as the tool to activate the institutional circuit for policies of**MACRO-REGION**, to be activated through recognizable and communicable initiatives.

For a technical analysis of the opportunities to access resources to make the implementation process sustainable, see the “**Concept Note**” elaborated for the application to the European program “I3 - CAPACITY BUILDING FOR LESS DEVELOPED REGIONS”.

## ONGOING INITIATIVES

### “AL IDRISI” Award:

Recalling previous seasons in which the Award was celebrated by indicating, on the one hand, a personality from the European shore and, on the other hand, another subject representing the North African shore of the Mediterranean, the desire to resume this interrupted experience is very significant from the point of view of the various activities and can be the object of political and cultural appreciation.

This emphasis should be placed in relation to the will and intellectual cultural expression that the Mayor of Palermo, Professor La Galla, has already expressed in past editions, then in his role as Rector of the University of Palermo. *The current membership of the City of Palermo to the GECT, expressed with the Council Resolution attached to the General Assembly Proceedings of 10/30/2025, It is a sign of dialogue and of integrated development opportunities that should be appropriately promoted, also with respect to the Sicilian Region.*



Map of the known world drawn up by the Arab geographer and scholar Al Idrisi.



### **“Italy-Malta” Program and collaboration with the “COSTAMED” EEIG**

"Piloting Accessible Tourism and Heritage for Sustainability – (PATHS)" - projects under the Interreg VI-A Italy-Malta 2021-2027 Programme. EGTC ARCHIMED is an Associate Partner. The project focuses on integrated relational tourism, developing ways to connect thematic tourism networks driven by conferences, cultural events, and sporting events, which can generate additional revenue. The COSTAMED EEIG, based in Malta, is a partner of EGTC ARCHIMED.

### **Blue Line Initiative and Mediterranean Cooperation – (edited by the Port Authority of Livorno - Partner of the GECT ARCHIMED, with the GECT as the coordinating body of the )**

Sicily is a strategic hub in the Mediterranean, a bridge between Europe and the southern shore. **Blue Line Initiative** It was created to govern the blue transition with an integrated vision that unites economic development, sustainability, innovation, and regional development. It is not a collection of projects, but a unified program that considers the Mediterranean as a shared space.

#### **The initiative includes four strategic axes and a transversal element**

1. **Blue Energy**– Ports as advanced energy platforms (hydrogen, LNG, e-fuels, cold ironing).
2. **Blue Industry**– Creation of the **Blue Hub** for industrial and technological experimentation (AI, sensors, sustainable shipbuilding, digital twin), in collaboration with ARTES 4.0.
3. **Blue Tourism**– Regenerative tourism, sustainable cruises, ports that communicate with cities.
4. **Blue Resilience**– Environmental monitoring, security, climate adaptation, dual use.

**Cross-sectional element: Blue Women**– Inclusion and enhancement of women's skills in ports, businesses, and institutions, through training, mentorship, and Mediterranean professional networks.

The strategy is based on the **Euro-Mediterranean cooperation**, with membership in the GECT ARCHIMED and development of the **green corridors** between Italian ports and the southern shore, integrating energy, sustainable logistics, and digitalization, with the aim of building collaborative networks between Sicilian and Mediterranean ports on energy, industry, innovation, resilience, and human capital. Not competition, but complementarity.

### **ITALY-TUNISIA PROGRAM - Interreg NEXT Italy-Tunisia 2021-2027**

Partnership proposals are being drafted for the implementation of actions to be financed under the program.



**CERV Program**(Citizens, Equality, Rights and Values) of the European Union: projects are being developed to promote fundamental rights, democracy, equality and European citizenship, with initiatives that promote social inclusion and the protection of vulnerable people and aspects of culture and civic education, democratic participation and awareness of fundamental rights.

## **MEMORANDUM OF UNDERSTANDING FOR THE IMPLEMENTATION OF JOINT INITIATIVES WITH EUROPEAN PARTNERS**

The mission of the EGTC, as defined by its Regulations, Convention, and Statute, defines this instrument as an institutional body responsible for the governance of agreements, understandings, steering committees, and other territorial coordination solutions for integrated and mutual development with other partner territories, for collaboration in the definition of integrated macroregional strategies.

**FEASIBILITY ANALYSIS OF APPLICATION I3** Instrument's call "Strand Cap2b" - "Capacity Building in Less Developed Regions"

### **1. Title: TRANSMED ISLANDS FESTIVAL**

**Integrated Investments for Relational Tourism Value Chains** through Green and Digital Transition in Cultural Entrepreneurship and Smart Manufacturing of Traditions

#### **2. Context and Rationale (Focus: Relational Value Chains & Green/Digital)**

The Mediterranean island regions possess an invaluable cultural and archaeological heritage which, although fragmented, represents a strategic asset for development. The project addresses the need to overcome fragmentation through integrated investments (I3-2026-CAP2b) aimed at creating relational tourism value chains that directly connect cultural entrepreneurship with smart manufacturing and traditions (e.g., excellent agri-food).

This interregional ecosystem does not merely focus on promotion, but catalyzes the green transition (supply chain sustainability) and the digital transition (digital twin, e-commerce, accessibility) as pillars for attracting investment capacity and creating a resilient development model for less-developed and outermost island regions.

---

#### **3. Objectives (Focus: Integrated Investments & Smart/Green)**

The objectives are aligned with creating a relational tourism model with high technological impact and sustainability:

- **Develop Capacities (Capacity Building):** Strengthen governance and entrepreneurial capacities in island regions to attract and manage integrated investments (I3).



- Integrate Value Chains: Create a relational value chain linking Cultural Entrepreneurship (events, sites) with Smart Manufacturing (digital transformation of traditions, e.g., agri-food) and Sustainable Tourism.
- Digital Transition: Implement a Digital Twin not only for promotion, but as an e-business platform that directly supports SMEs in e-commerce, traceability, and on-demand production.
- Green Transition: Integrate environmental sustainability criteria (reducing event impact, green logistics) into event management and the traditional agri-food supply chain.
- Replicability: Develop a replicable integrated investment model for other Mediterranean areas, validated by rigorous impact analysis.

---

#### 4. Main Activities (Focus: Concrete Examples of Integrated Investments)

The activities are structured as integrated investments connecting culture, smart manufacturing, and transition:

- WP2: Sustainable and Inclusive Cultural Circuit (Cultural Entrepreneurship)
  - Theatrical Performances on Ancient Drama: Professional theatre production (outsourcing €150,000) held at archaeological sites, focusing on environmental impact reduction and sensory/linguistic inclusivity (green transition). Same strategy (replicability) on Sport & other patterns, including Electronic games, Software development and Science.
  - Student Mobility: Exchange between students (Italy, Greece, Bulgaria, and Spain) on topics of sustainable cultural management and heritage digitization (Capacity Building).
- WP3: Exhibition-Market 4.0 (Smart Manufacturing & Traditions)
  - Permanent Digital Exhibition-Market: Setting up exhibition spaces that valorize traditional products of excellence (oil, wine, ancient grains) linked to myths. The investment includes the integration of technologies for digital traceability and immersive product experience.
  - Logistics/Digital Setup Outsourcing: External services for setup and technological integration (e.g., QR codes, AR) for sales (outsourcing €75,000).
- WP4: Digital Twin for Relational E-Business (Digital Transition)
  - Integrated E-Business Platform: Creation of a platform serving as a Digital Twin of the heritage and a direct e-commerce channel for SMEs (smart manufacturing). It will be equipped with tools for on-demand production and smart inventory management (Investment €100,000).
- WP5: Capacity Building and Governance (Attracting I3 Investments)
  - Specialized Training: Training for cultural and tourism operators on I3 investment strategies, green business models, and management of complex digital platforms.



- **Quadruple Helix Steering Committees:** Local committees (PA, SMEs, Universities, Civil Society) focus on identifying future investments and the vertical integration of supply chains.
- 

## 5. Consortium Structure and Governance

The consortium and governance are aimed at managing complex and integrated investments:

- Coordinator: EGTC ArchiMed – ensures a solid institutional framework for fund management and interregional coordination (Governance and I3 Fund Management).
- Institutional/Regional Partners: Region of Crete, GAL Tyrrhenian-Aeolian, Upper Tyrrhenian Port Authority (Livorno), Larnaca District Development Agency (Cyprus), Municipalities of Taormina, Catania, Palermo, E.E.I.E. Costa MED (Malta). Essential for political endorsement and the post-project investment phase.
- Methodological and Digital Partners: ARCES Inter-university Consortium – crucial for impact analysis, smart manufacturing models, and replication methodology.

## TRANSVERSAL OBJECTIVE: RESHAPING THE WEBSITE

A transversal primary objective is to reshape the [GECTARCHIMED.EU](https://www.gectarchimed.eu) website. First of all, as a compliance on transparency, which is an ethical responsibility and a legal duty.

We are ready now to affirm that the website has been improved with the page *AMMINISTRAZIONE TRASPARENTE*, which is linked to the homepage. Inside you will find the last documents of the General Assembly and the other fundamental documents concerning the decisions and the life of **ARCHIMED** as an institution.

A new section named NEWS, OPPORTUNITIES AND EXPERTISE has been implemented and it will be the dynamic magazine to tell news about the **ARCHIMED**' initiatives, both as a unitary body and also with reference to each Partner Member and even to a single person.

It is important to underline the meaning of a website for an organization based on several territories, far in distance and with the sea as a border. Therefore, the improvement of the website is a clear and main objective, and we will work together to realize a great webshop where everything concerning the **ARCHIMED** is found and recorded, and also as a promotional portal for territorial excellence.



### Indications for the Technical Secretariat

This document is transmitted, as per statutory provisions, to the **President** for information and to the Managers of the **Technical Secretariat** for any comments and improvements.

In particular, without limiting the potential contribution to these annotations, the Managers are invited to the following thematic contributions:

**Larnaca District Development Agency - Cipro:** *improve the involvement of non-Italian partners, encouraging active policies specifically related to Cyprus, Crete, and the Balearic Islands using the model of the MEDITERRANEAN ISLANDS FESTIVAL according to the complex structure provided in the document.*

**Upper Tyrrhenian Port Authority - Livorno:** *Explore the possibility of connecting planned initiatives via naval systems; verify the possibility of extending sustainable energy to an experimental port program (to be linked to the Mediterranean Islands Festival as a basis for time-limited experiments);*

**ARCES Interuniversity Consortium - Palermo:** *Foster opportunities for experimenting with integrated relational tourism models; engage foreign universities to develop a common methodological framework for informing and training partner institutions and the corresponding representatives of the territorial steering committees; and raise awareness of the initiatives by recruiting partners among schools in the EGTC territories and involving tourism boards.*

**The Director**

*Dr. Davide Crimi*